



Nicole Harari, WOCAT Secretariat, Centre for Development and Environment (CDE), University of Bern

u^b

UNIVERSITÄT
BERN

CDE
CENTRE FOR DEVELOPMENT
AND ENVIRONMENT



Schweizerische Eidgenossenschaft
Confédération suisse
Confederazione Svizzera
Confederaziun svizra

Swiss Agency for Development
and Cooperation SDC



Food and Agriculture
Organization of the
United Nations



ISRIC
World Soil Information



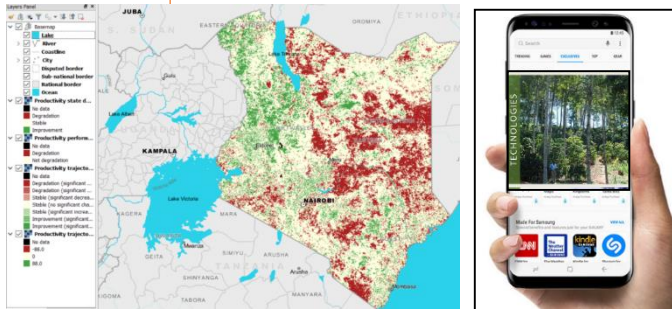
giz
Deutsche Gesellschaft
für Internationale
Zusammenarbeit (GIZ) GmbH



ICIMOD

What is WOCAT

WOCAT's mission is to support *innovation and decision-making in SLM* by:



maintain global, open
SLM network



harmonize and
further develop
tools and methods
with partners



provide open access
global SLM data
repository



build capacities at
local, regional and
national level

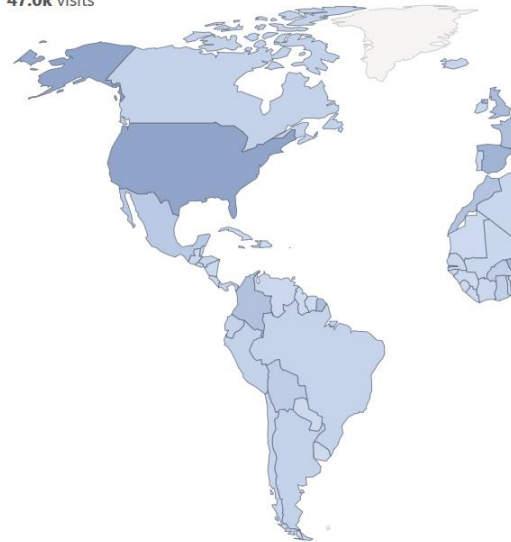


What is WOCAT

Global SLM Database – recommended by UNCCD

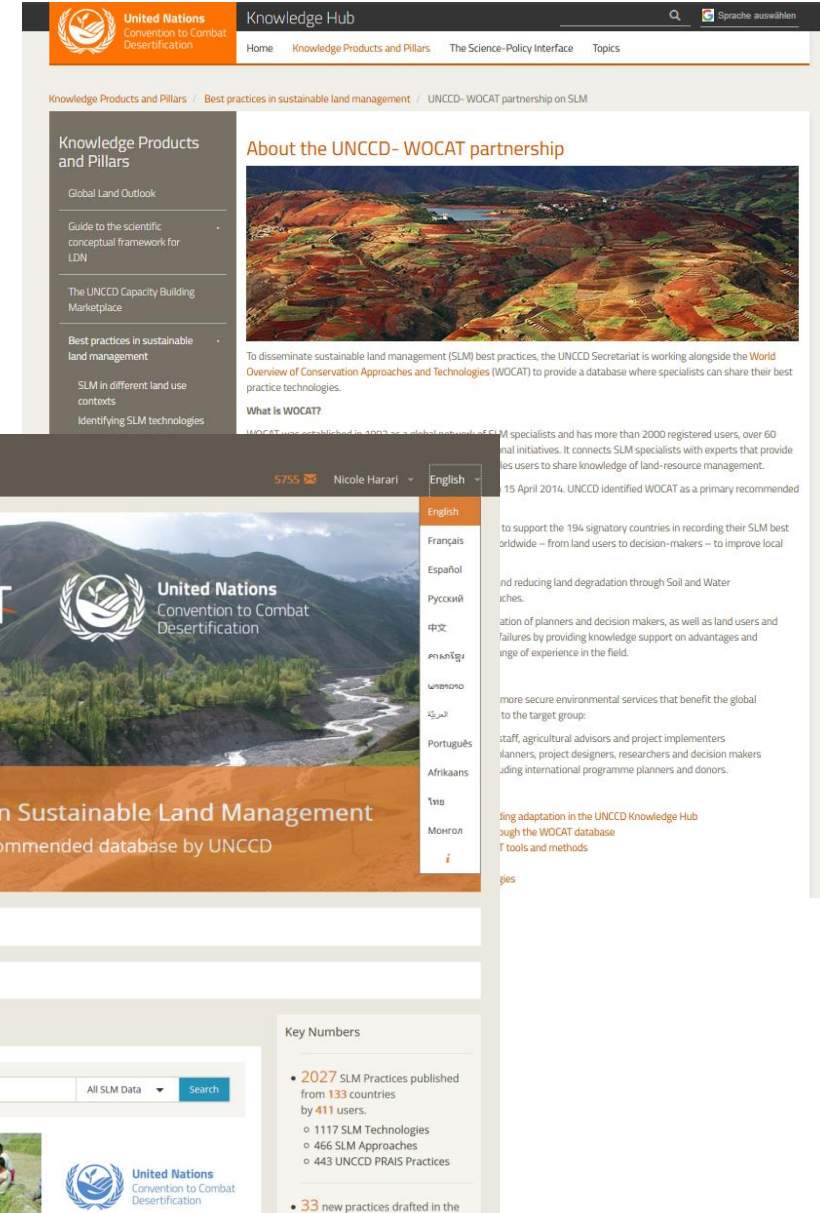
Visitor Map

47.0k visits



Key Numbers

- **2027** SLM Practices published from **133** countries by **411** users.
 - 1117 SLM Technologies
 - 466 SLM Approaches
 - 443 UNCCD PRAIS Practices
- **33** new practices drafted in the past 90 days.
- **71553** visits from **195** different countries since launch in August 2016.

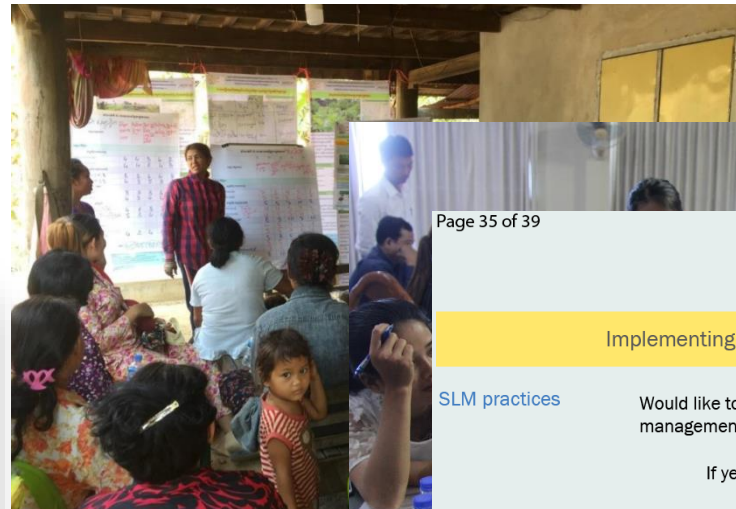


The screenshot shows the WOCAT website interface. At the top, there is a navigation bar with the United Nations logo and the text 'United Nations Convention to Combat Desertification'. Below this, there is a 'Knowledge Hub' section with a search bar and a language selector. The main content area features a 'Knowledge Products and Pillars' sidebar with links to 'Global Land Outlook', 'Guide to the scientific conceptual framework for LDN', 'The UNCCD Capacity Building Marketplace', 'Best practices in sustainable land management', 'SLM in different land use contexts', and 'Identifying SLM technologies'. The main content area has a header 'About the UNCCD- WOCAT partnership' with a large image of a landscape and text describing the partnership's goal to disseminate SLM best practices. Below this, there is a 'What is WOCAT?' section. The bottom part of the screenshot shows the 'SLM DATABASE' section with a search bar, a language dropdown menu (English, Français, Español, Русский, 中文, বাংলা, العربية, Português, Afrikaans, ไทย, Монгол), and a 'Key Numbers' section that repeats the statistics from the slide. There is also an 'Add SLM data' button and a search bar for the database.

What is WOCAT

Global SLM Database – recommended by UNCCD

Use of knowledge for evidence-based decision-making



Evidence-based SLM

SLM

Page 35 of 39

Implementation framework
Action on the Ground

Implementing sustainable land management practices

SLM practices Would like to share experiences on how your country is implementing sustainable land management (SLM) practices to address DLDD? Yes No

If yes, what types of SLM practices are being implemented?

Pastoralism and grazing land management
Post-harvest measures
Rotational system (crop rotation, fallows, shifting cultivation)
Surface water management (spring, river, lakes, sea)
Water diversion and drainage

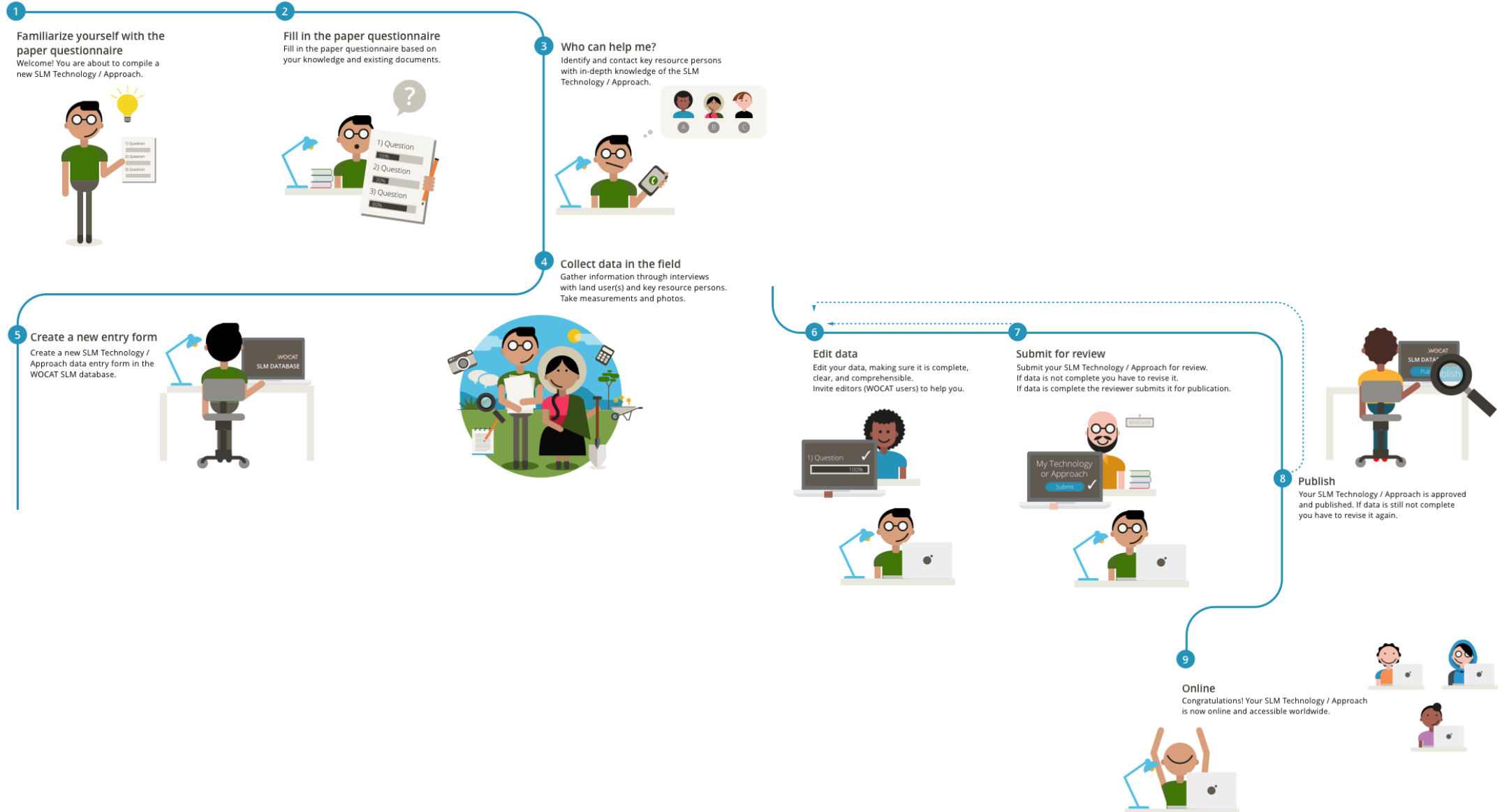
Narrative Provide any complementary information you deem relevant

under the WOCAT framework. The project project has documented over 25 best SLM practices (agro-

Support Has your country supported other countries in the implementation of SLM practices? Yes No

Cambodia UNCCD reporting 2017-2018

Procedure of documentation and publication



Standardized and accessible data

WOCAT SLM DATABASE
7633 Tatenda Lemann ▼ English ▼

SLM Technologies ▼

Country
Project
Institution
Language

Advanced filter for
SLM Technologies ⓘ
SLM Approaches ⓘ
Search

SLM Data: SLM Technologies ✕

i Only data declared as public are visible.

Your search results (1157)

Contour Trench Bund [Afghanistan]

Contour trench bund applied on contour lines of mod
Compiler: Aqila Haidery 04/12/2016 8:12 a.m.

EN

Community bakery [Afghanistan]

A sustainable option for bread baking and reducing st
Compiler: Aqila Haidery 01/05/2013 9:25 a.m.

EN

Stone wall [Afghanistan]

Contour stone walls constructed on moderate to steep
Compiler: Aqila Haidery 02/16/2016 6:59 a.m.

1514

Total SLM Practices

1097 / 72.46 %

Technologies

417 / 27.54 %

Approaches

883

Institutions

1096

SLM specialists

95

Countries

Nr. of case studies per country ⓘ

Location of documented SLM ⓘ

Main purpose(s) of the Technology (land user's perspective) ⓘ

- reduce, prevent, restore land degradation
- improve production
- create beneficial economic impact
- conserve ecosystem
- adapt to climate change/ extremes and its impacts
- reduce risk of disasters
- preserve/ improve biodiversity
- create beneficial social impact

Land use types ⓘ

- Cropland
- Grazing land
- Forest/ woodlands
- Settlements, infrastructure
- Waterways, waterbodies, wetlands
- Unproductive land
- Mixed (crops/ grazing/ trees), incl. agroforestry

Managing SLM Knowledge – 25+ years of WOCAT experience

To enhance **durability**:

- harmonized
- standardized
→ exchangeable and comparable
- open access
- easy to access and use
- integrated in platforms that survive a program/ project
- transdisciplinary
- involvement of research/ students
- co-developed and co-produced
- useful evidence for local, national, regional and global level
- knowledge products generated for different audiences from same data set/ knowledge base





The screenshot shows the WOCAT SLM DS Tool interface. At the top, there is a navigation menu with links for Home, About, SLM Practices, Guidelines, Videos, and DS Tool. The main heading reads "Decision support to select appropriate Sustainable Land Management (SLM) practices within the landscape". Below this, there are tabs for "Ecosystem", "Conservation Measure", "Main Function", and "Type of Land Degradation". A filter bar shows "All" selected, with other options for "Coast", "Lowland", "Upland - Hillyland", and "Highland". Two featured practice cards are visible: "Conservation Tillage Practices for Corn Production 'Tpid Saka'" and "Natural Vegetative Strips (NVS)".


The book cover features the WOCAT and TERRAFRICA logos at the top. The title is "Sustainable rangeland management in Sub-Saharan Africa" with the subtitle "Guidelines to good practice". The cover image shows a vast, open rangeland landscape with a herd of cattle grazing near a water source. The World Bank Group logo is visible in the bottom right corner.


Tools 4 Land Degradation Neutrality (SDG 15.3)

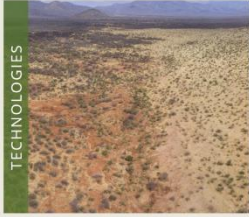
CI trends.earth












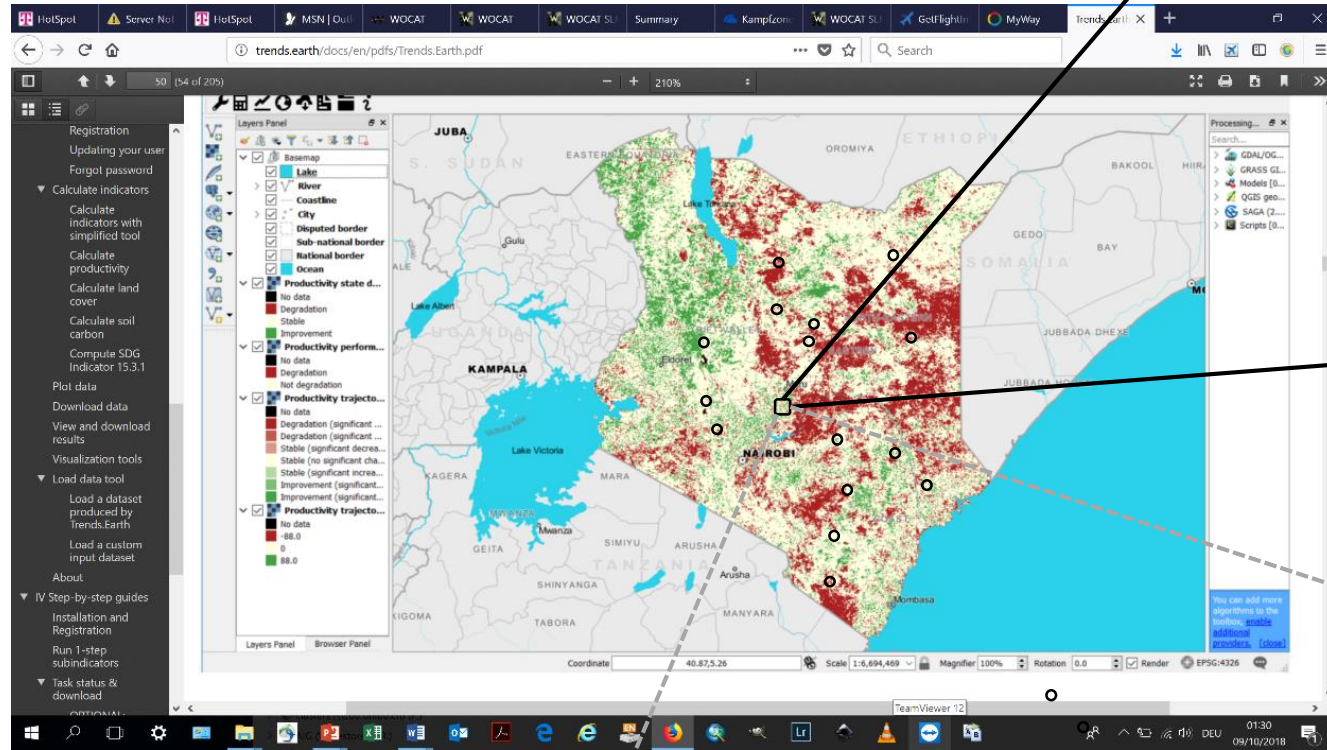
TECHNOLOGIES

Rangeland Restoration by cutting invasive species and

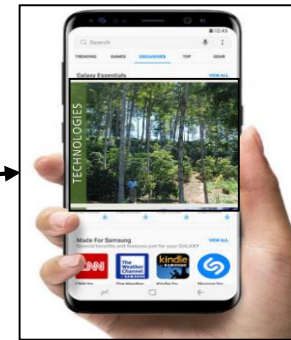
This 'Rangeland Restoration' technology is part of a 'Holistic Rangeland Management' approach, involving the removal of invasive vegetation (predominantly *Acacia reficiens*) and reseedling with grass (*Cenchrus ciliaris*) to rehabilitate degraded communal grazing land.

Compiler: Harry Wells 02/05/2018 8:51 a.m.





SLM Best Practices and Carbon Benefits WOCAT / CSU



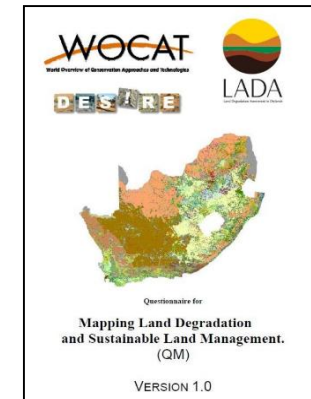
Mobile App: USDA/CU



Linking local - national - global



FAO



Validation through expert assessment: WOCAT-FAO

Thank you!

www.wocat.net

